

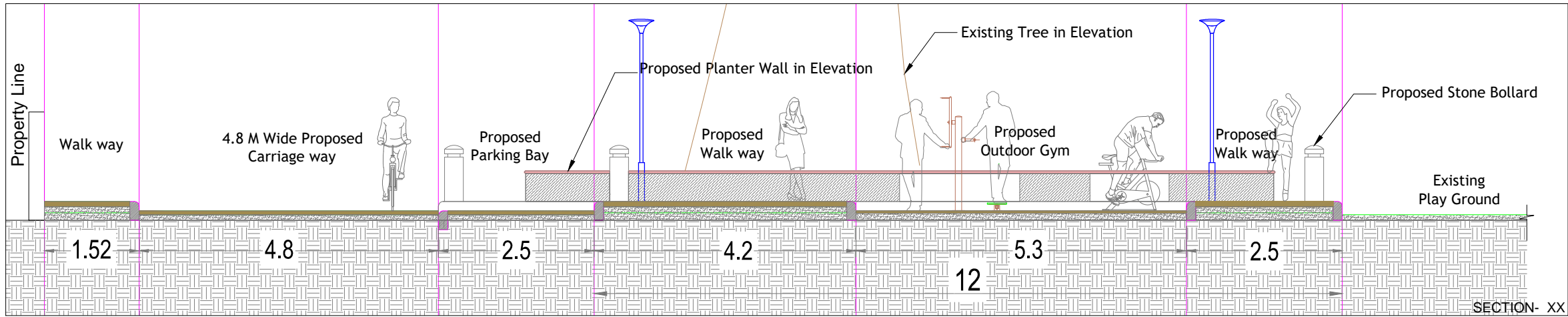
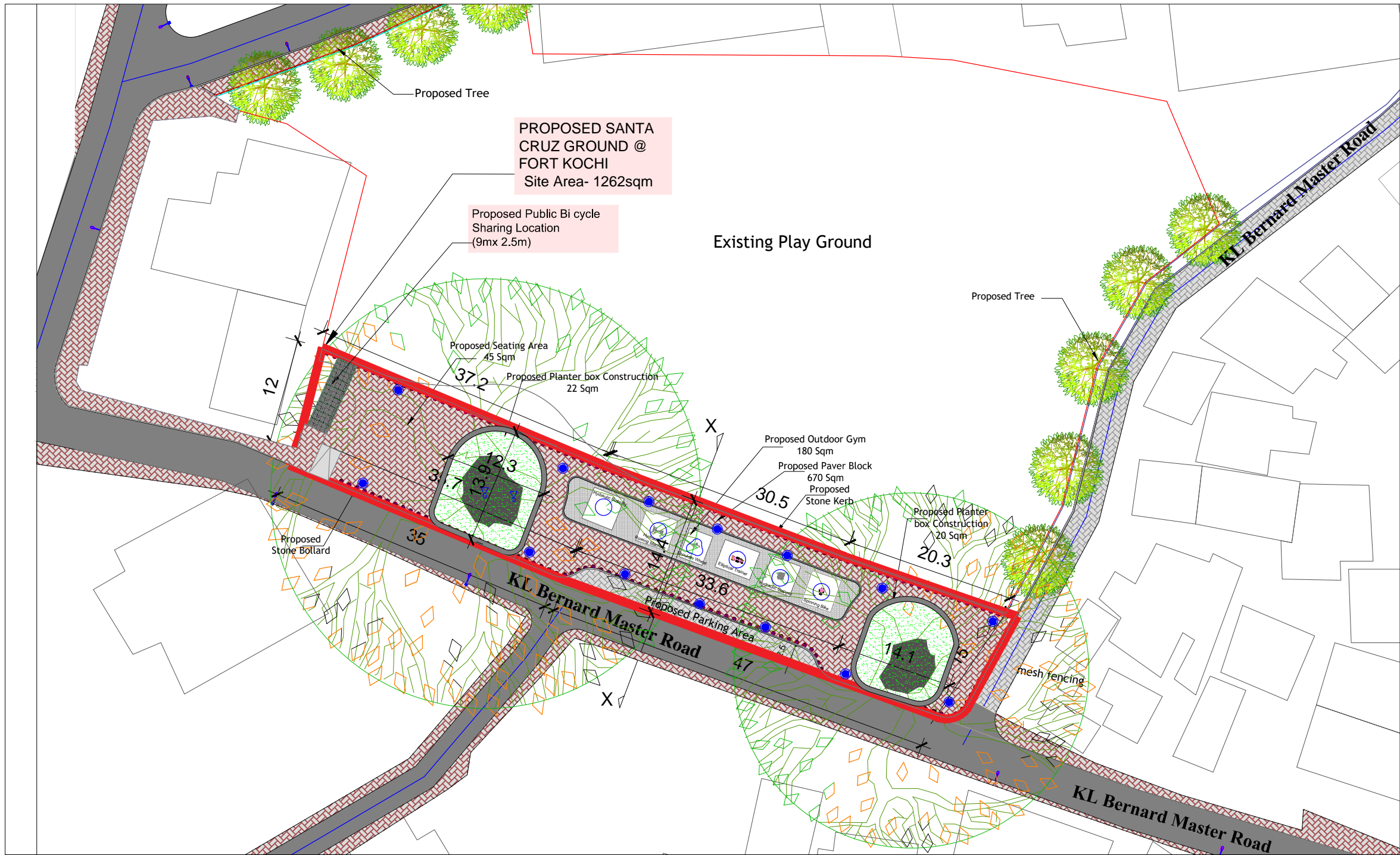
- NOTE:
1. ALL DIMENSIONS ARE IN M UNLESS MENTIONED OTHERWISE.
 2. ONLY WRITTEN DIMENSION ARE TO BE FOLLOWED
 3. THIS DRAWING IS TO BE READ ALONG WITH ALL REFERENCED OR MENTIONED DRAWINGS.
 4. NECESSARY CLARIFICATIONS MIGHT BE OBTAINED FROM CSML.
 5. DISCREPANCY IF ANY SHOULD BE BROUGHTR TO THE NOTICE OF CSML OFFICE IMMEDIATELY.

LEGEND FOR PROPOSED LIGHTING			
S NO.	SYMBOL	DESCRIPTION	QTY IN NOS.
01		8M HEIGHT POLE WITH 113W, LED LIGHT , 4000K	02
02		3M HEIGHT POST TOP WITH 34W LED LIGHT 106, 3000K @ 3.5M HEIGHT	12

- Existing Tree
- Proposed Tree
- Hydraulic Stepper (3.7x3.85m)
- Elliptical Trainer (4.45x3.5m)
- Air Walker (5.35x5.55m)
- Shoulder Wheel (2.95x3.65m)



KEY PLAN			
CLIENT : COCHIN SMART MISSION LIMITED			
9th Floor, Revenue Tower, Park Avenue, Kochi-682011, Kerala,India			
PMC TEAM : IPE Global & Haskoning DHV Consulting Pvt. Ltd.			
5th Floor, Revenue Tower, Park Avenue, Kochi-682011, Kerala,India			
PROJECT NAME			
DEVELOPMENT OF OPEN SPACE @ FORT KOCHI BEACH			
TITLE : DETAIL PLAN & SECTION			
DRG NO. CSML/M8/OSG/OP-FK/AR-001	SCALE : 1:2500 (A3) DATE : 02-09-2019	N	
Drawn BY RAMANUJAM	Design BY RAMANUJAM	Checked BY ABHISHEK	REVISION R2
SIGNATORY ARCHITECT:		SIGNATORY CSML:	



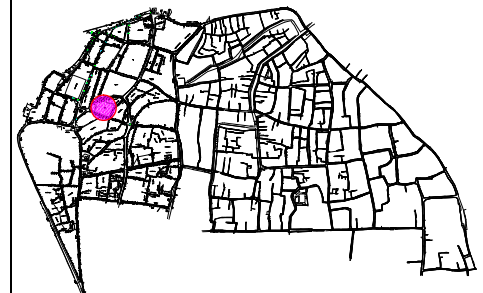
- NOTE:
1. ALL DIMENSIONS ARE IN M UNLESS MENTIONED OTHERWISE.
 2. ONLY WRITTEN DIMENSION ARE TO BE FOLLOWED
 3. THIS DRAWING IS TO BE READ ALONG WITH ALL REFERENCED OR MENTIONED DRAWINGS.
 4. NECESSARY CLARIFICATIONS MIGHT BE OBTAINED FROM ENGINEER.
 5. DISCREPANCY IF ANY SHOULD BE BROUGHTR TO THE NOTICE OF ENGINEER IMMEDIATELY.

LEGEND FOR LIGHTING

S NO.	SYMBOL	DESCRIPTION	QTY IN NOS.
01		27W LED SPOT LIGHT-NSL-12M-3000k	04
02		3M HEIGHT POST TOP WITH 34W LED LIGHT 100, 3000k @ 3.5M HEIGHT	14

LEGEND FOR OUTDOOR GYM

- Hydraulic Stepper (3.7x3.85m)
- Elliptical Trainer (4.45x3.5m)
- Hydraulic rowing machine (4.00x3.85m)
- Shoulder Wheel (2.95x3.65m)
- Spinning Bike (4.05x3.70m)
- Hydraulic Butterfly (4x3.85m)



KEY PLAN

CLIENT : COCHIN SMART MISSION LIMITED
9th Floor, Revenue Tower,
Park Avenue, Kochi-682011, Kerala,India

PMC TEAM : IPE Global & Haskoning DHV Consulting Pvt. Ltd.
5th Floor, Revenue Tower,
Park Avenue, Kochi-682011, Kerala,India

PROJECT NAME

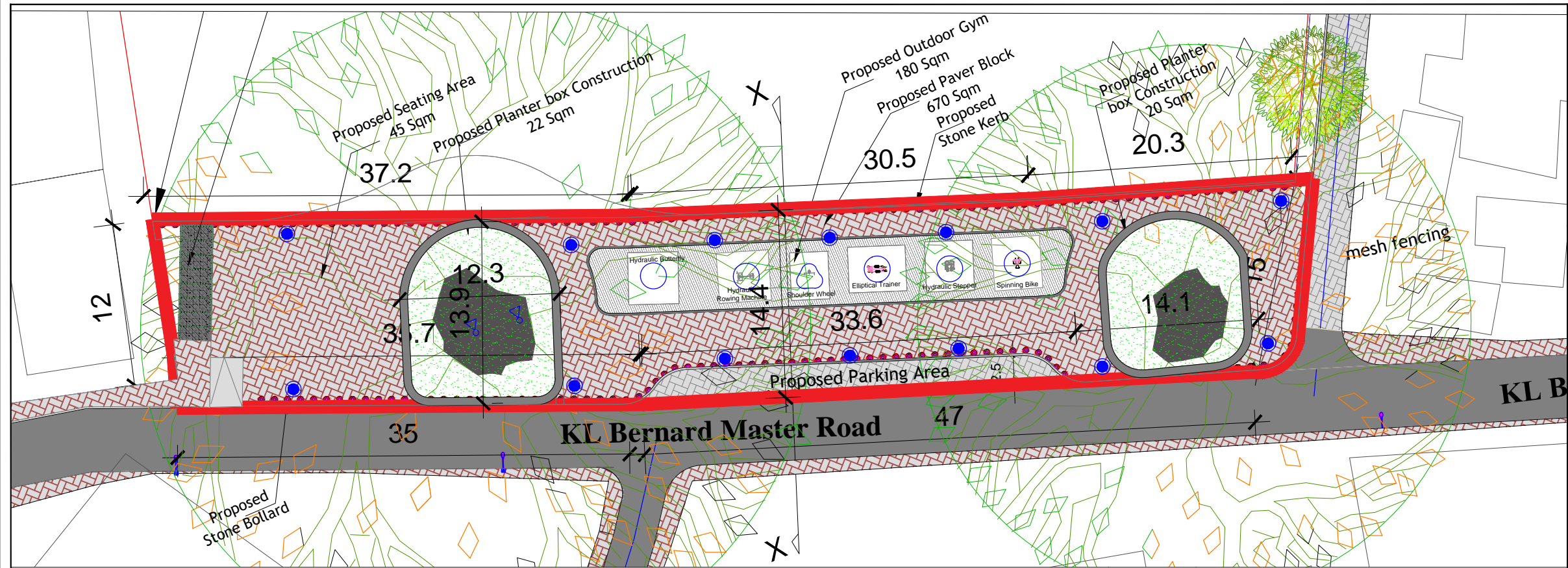
DEVELOPMENT OF OPEN SPACE @FORT KOCHI
SANTA CRUZ GROUND

TITLE : SANTA CRUZ GROUND- DEVELOPMENT PLAN

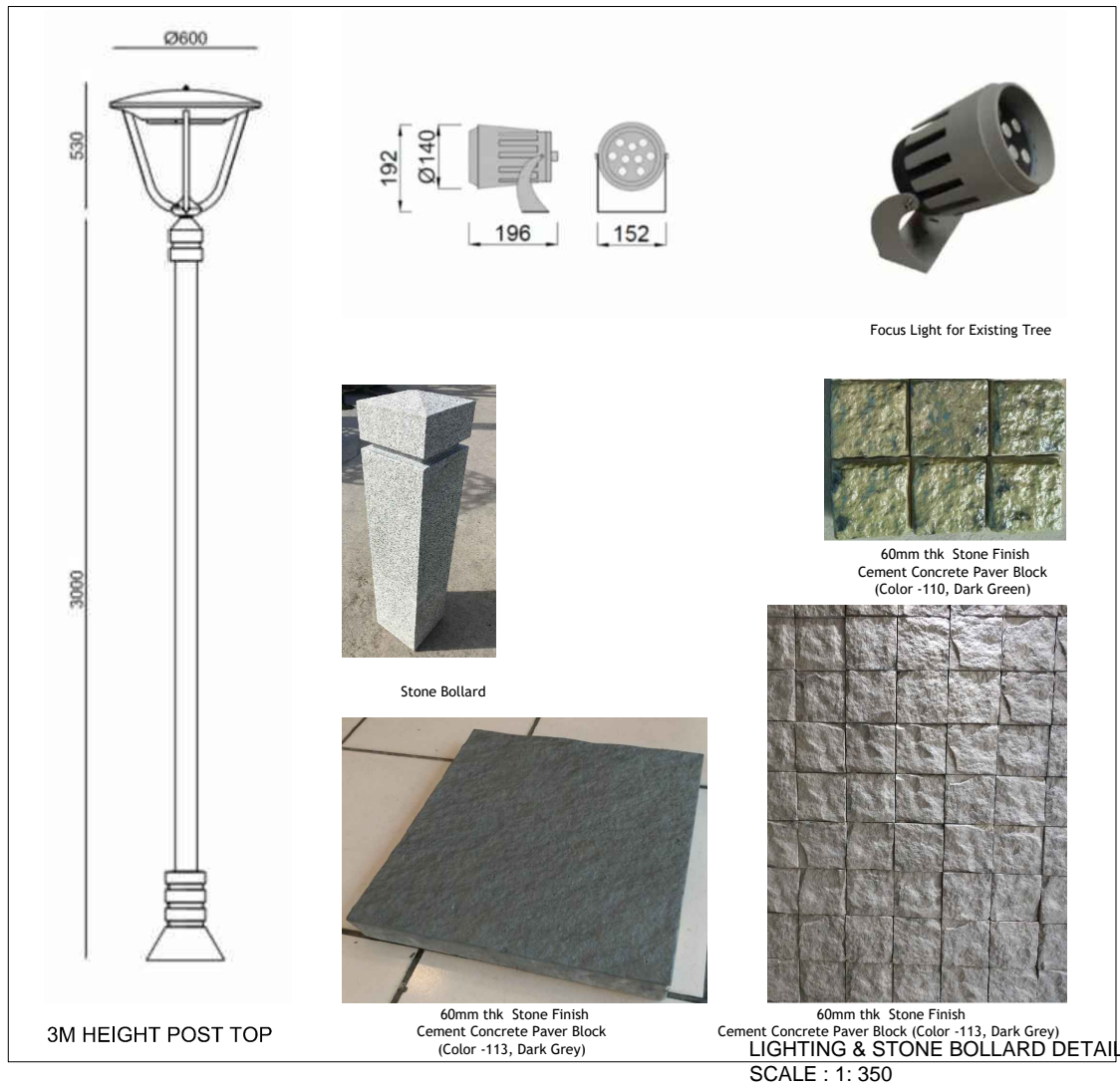
DRG NO. CSML/M8/OSG/SC-FK/AR-001 SCALE : 1:500 (A3) DATE : 06-09-2019

Drawn BY	Design BY	Checked BY	REVISION
RAMANUJAM	RAMANUJAM	ABHISHEK	R1

SIGNATORY TEAM LEADER : SIGNATORY CSML :



PLAN
SCALE : 1: 350



GYM EQUIPMENT DETAIL
SCALE : 1: 750

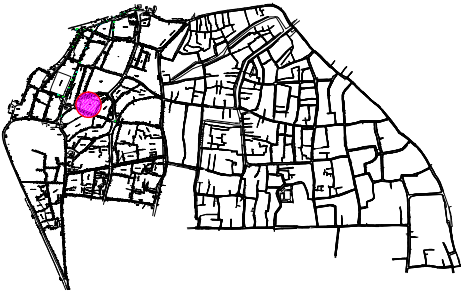
- NOTE:
1. ALL DIMENSIONS ARE IN M UNLESS MENTIONED OTHERWISE.
 2. ONLY WRITTEN DIMENSION ARE TO BE FOLLOWED
 3. THIS DRAWING IS TO BE READ ALONG WITH ALL REFERENCED OR MENTIONED DRAWINGS.
 4. NECESSARY CLARIFICATIONS MIGHT BE OBTAINED FROM ENGINEER.
 5. DISCREPANCY IF ANY SHOULD BE BROUGHTR TO THE NOTICE OF ENGINEER IMMEDIATELY.

LEGEND FOR LIGHTING

S NO.	SYMBOL	DESCRIPTION	QTY IN NOS.
01		27W LED SPOT LIGHT-NSL-12M.3000k	04
02		3M HEIGHT POST TOP WITH 34W LED LIGHT 106, 3000k @ 3.5M HEIGHT	14

LEGEND FOR OUTDOOR GYM

- Hydraulic Stepper (3.7x3.85m)
- Elliptical Trainer (4.45x3.5m)
- Hydraulic rowing machine (4.00x3.85m)
- Shoulder Wheel (2.95x3.65m)
- Spinning Bike (4.05x3.70m)
- Hydraulic Butterfly (4x3.85m)



KEY PLAN

CLIENT : COCHIN SMART MISSION LIMITED
9th Floor, Revenue Tower,
Park Avenue, Kochi-682011, Kerala,India

PMC TEAM : IPE Global & Haskoning DHV Consulting Pvt. Ltd.
5th Floor, Revenue Tower,
Park Avenue, Kochi-682011, Kerala,India

PROJECT NAME

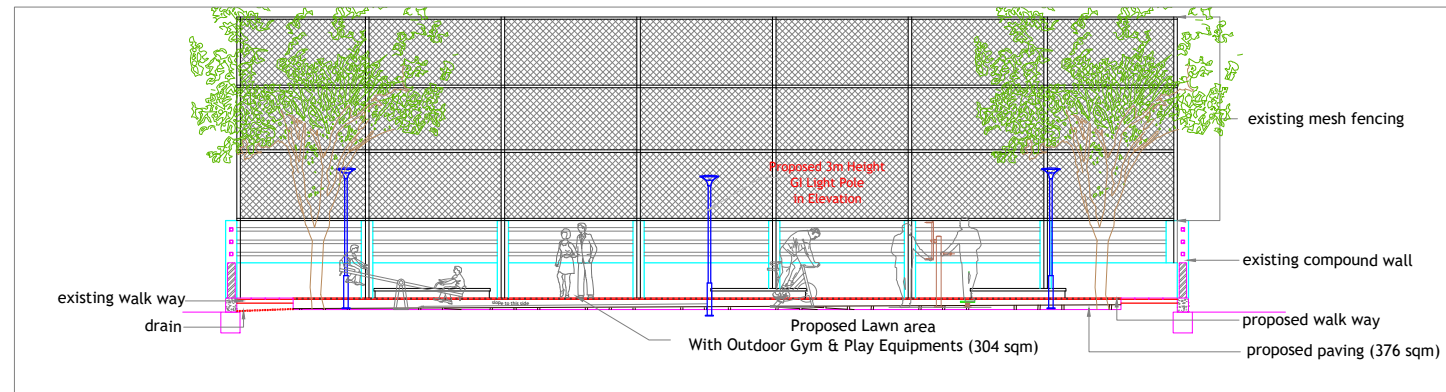
DEVELOPMENT OF OPEN SPACE @FORT KOCHI
SANTA CURZ GROUND

TITLE : DETAIL PLAN & REFERENCE IMAGES

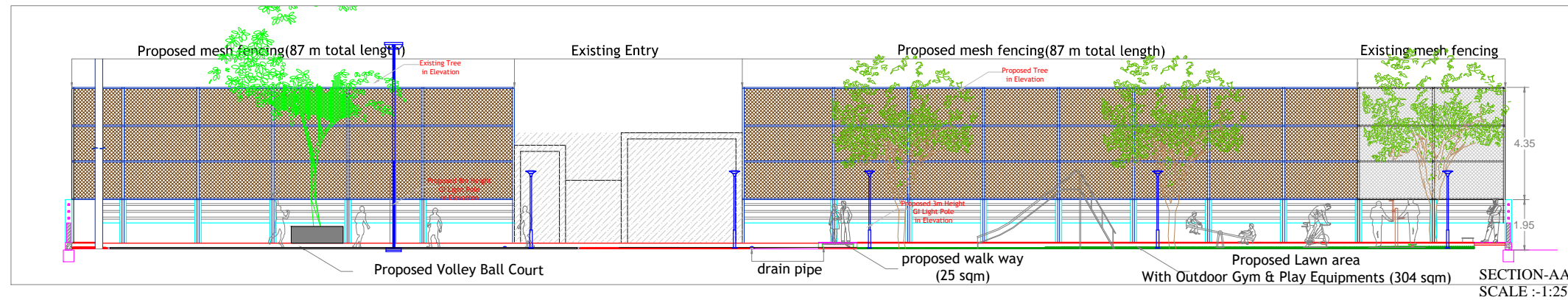
DRG NO. CSML/M8/OSG/SC-FK/AR-002
SCALE : 1:500 (A3)
DATE : 06-09-2019

Drawn BY	Design BY	Checked BY	REVISION
RAMANUJAM	RAMANUJAM	ABHISHEK	R1

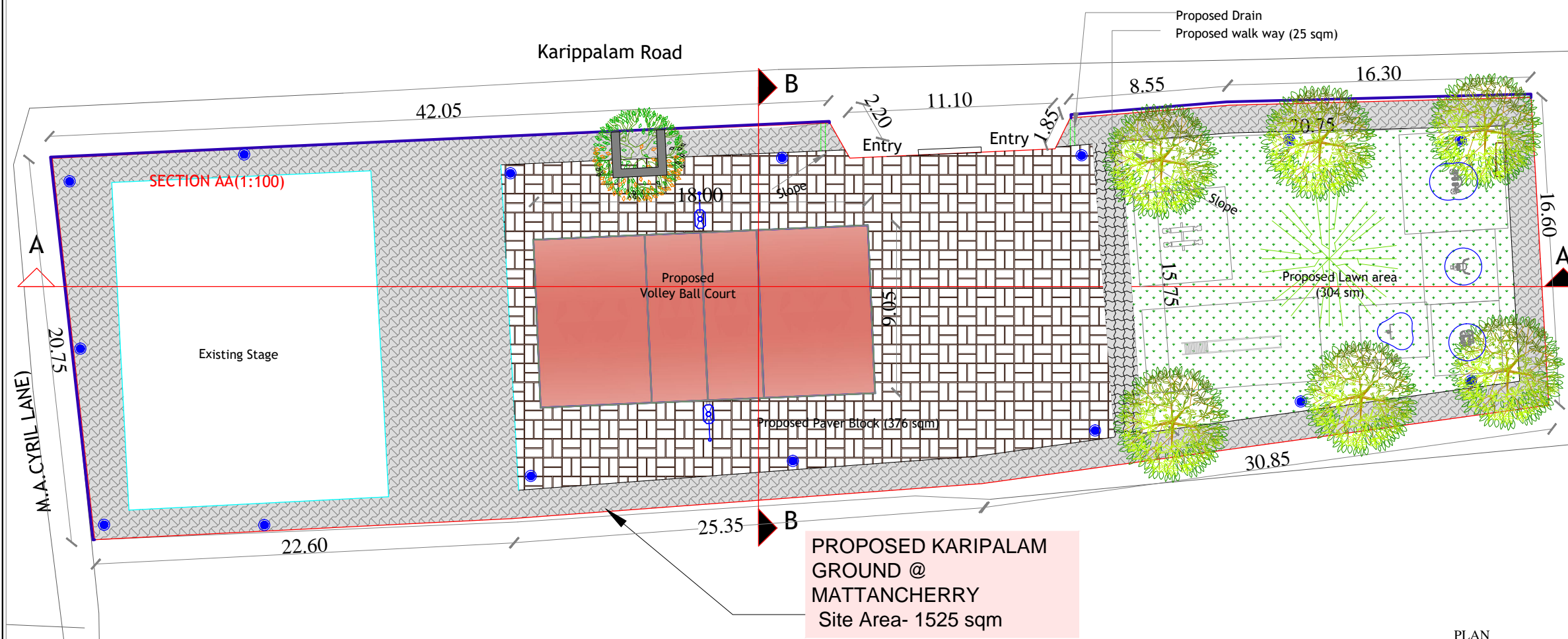
SIGNATORY TEAM LEADER :
SIGNATORY CSML :



SECTION BB
SCALE :- 1:100



SECTION-AA
SCALE :- 1:250



PLAN
SCALE :- 1:250

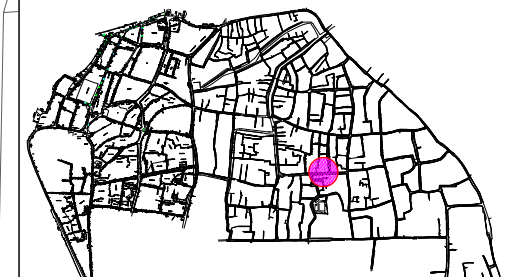
NOTE:

1. ALL DIMENSIONS ARE IN M UNLESS MENTIONED OTHERWISE.
2. ONLY WRITTEN DIMENSION ARE TO BE FOLLOWED
3. THIS DRAWING IS TO BE READ ALONG WITH ALL REFERENCED OR MENTIONED DRAWINGS.
4. NECESSARY CLARIFICATIONS MIGHT BE OBTAINED FROM ENGINEER.
5. DISCREPANCY IF ANY SHOULD BE BROUGHT TO THE NOTICE OF ENGINEER IMMEDIATELY.

LEGEND FOR LIGHTING

S NO.	SYMBOL	DESCRIPTION	QTY IN NOS.
01		8M HEIGHT SINGLE ARM POLE WITH 113W, LED LIGHT, 4000K	02
02		3M HEIGHT POST TOP WITH 34W LED LIGHT 100, 3000K @ 3.5M HEIGHT	15

- EXISTING TREE
- PROPOSED TREE
- SOLAR TREE
- Hydraulic Stepper (3.7x3.85m)
- Air Walker (5.35x5.55m)
- Shoulder Wheel (2.95x3.65m)
- Hydraulic Butterfly (4x3.85m)
- See Saw
- Slide



KEY PLAN

CLIENT : COCHIN SMART MISSION LIMITED
9th Floor, Revenue Tower,
Park Avenue, Kochi-682011, Kerala, India

PMC TEAM : IPE Global & Haskoning DHV Consulting Pvt. Ltd.
5th Floor, Revenue Tower,
Park Avenue, Kochi-682011, Kerala, India

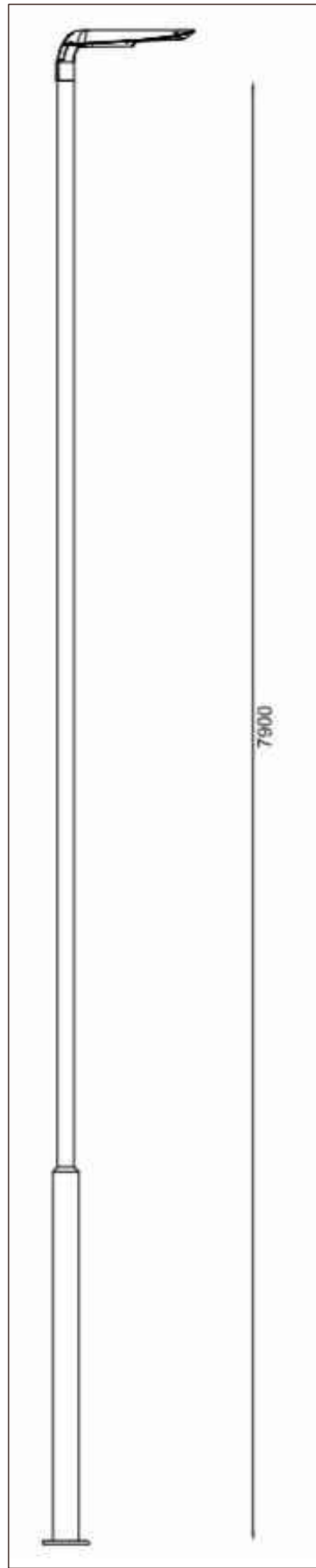
PROJECT NAME
DEVELOPMENT OF OPEN SPACE @ MATTANCHERRY
KARIPPALAM GROUND

TITLE : Karippalam Ground -DETAIL PLAN & SECTION

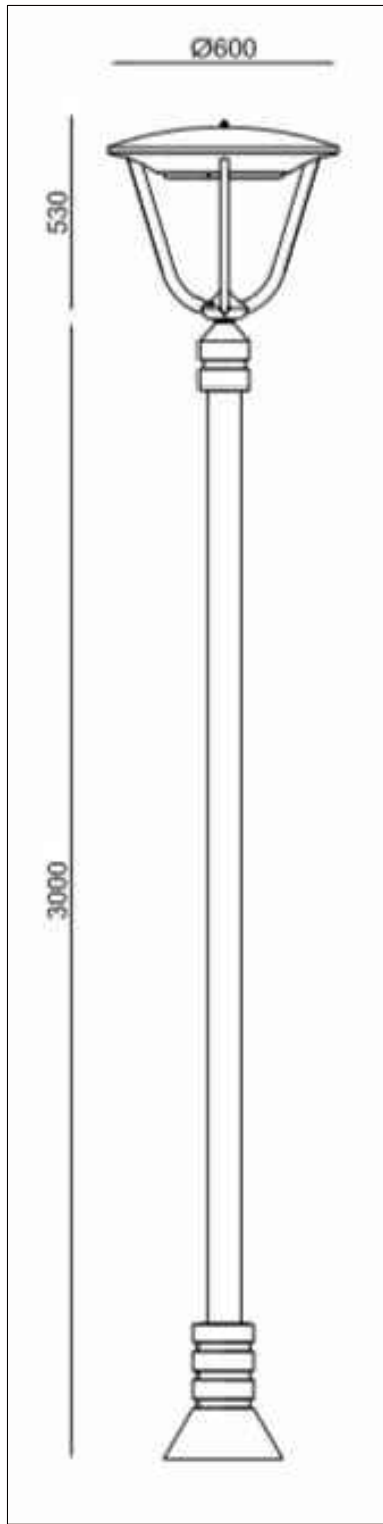
DRG NO. CSML/M8/OSG/KG-MC/AR-001
SCALE : as shown (A3)
DATE : 06-09-2019

Drawn BY	Design BY	Checked BY	REVISION
MINI	RAMANUJAM	ABHISHEK	R2

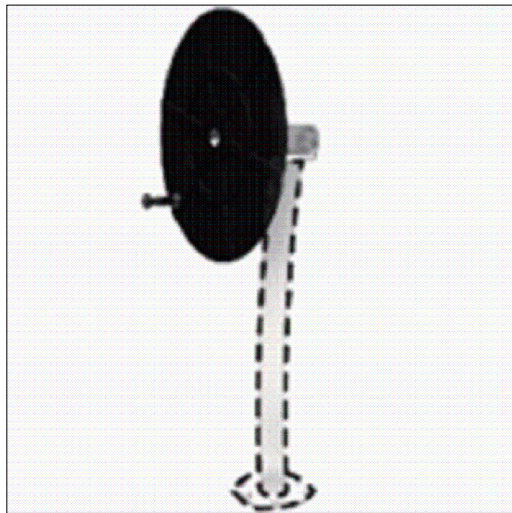
SIGNATORY TEAM LEADER: SIGNATORY CSML :



8M HEIGHT POLE



3M HEIGHT POST TOP



Shoulder Wheel



Airwalker



Steel Swings



Hydraulic Stepper



Hydraulic Butterfly



Steel See Saw

- NOTE:
1. ALL DIMENSIONS ARE IN M UNLESS MENTIONED OTHERWISE.
 2. ONLY WRITTEN DIMENSION ARE TO BE FOLLOWED
 3. THIS DRAWING IS TO BE READ ALONG WITH ALL REFERENCED OR MENTIONED DRAWINGS.
 4. NECESSARY CLARIFICATIONS MIGHT BE OBTAINED FROM ENGINEER.
 5. DISCREPANCY IF ANY SHOULD BE BROUGHT TO THE NOTICE OF ENGINEER IMMEDIATELY.

LEGEND FOR LIGHTING

S NO.	SYMBOL	DESCRIPTION	QTY IN NOS.
01		8M HEIGHT SINGLE ARM POLE WITH 113W, LED LIGHT, 4000K	02
02		3M HEIGHT POST TOP WITH 34W LED LIGHT 108, 3000K @ 3.5M HEIGHT	15



- EXISTING TREE



- PROPOSED TREE



- SOLAR TREE



- Hydraulic Stepper (3.7x3.85m)



- Air Walker (5.35x5.55m)



- Shoulder Wheel (2.95x3.65m)



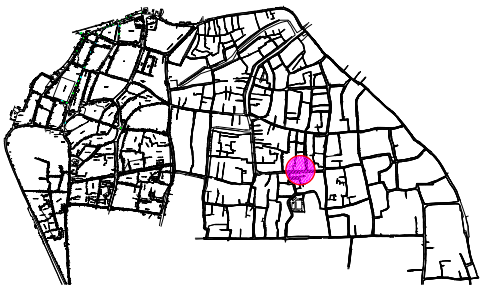
- Hydraulic Butterfly (4x3.85m)



- See Saw



- Slide



KEY PLAN

CLIENT : COCHIN SMART MISSION LIMITED
9th Floor, Revenue Tower,
Park Avenue, Kochi-682011, Kerala,India

PMC TEAM : IPE Global & Haskoning DHV Consulting Pvt. Ltd.
5th Floor, Revenue Tower,
Park Avenue, Kochi-682011, Kerala,India

PROJECT NAME
DEVELOPMENT OF OPEN SPACE @ MATTANCHERRY
KARIPPALAM GROUND

TITLE : Karippalam Ground -DETAIL PLAN & SECTION

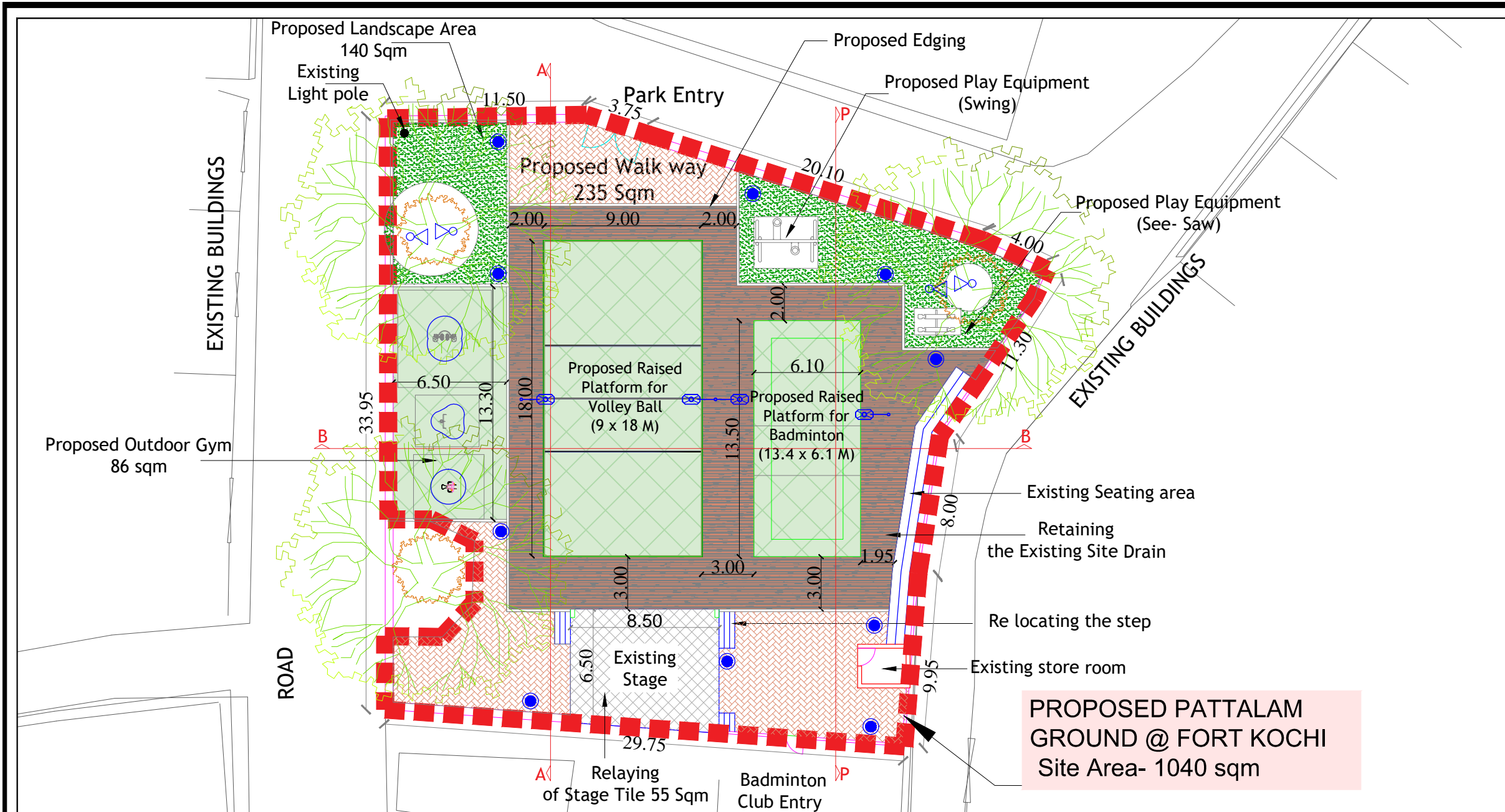
DRG NO. CSML/M8/OSG/KG-MC/AR-002
SCALE : as shown (A3)
DATE : 06-09-2019

Drawn BY	Design BY	Checked BY	REVISION
MINI	RAMANUJAM	ABHISHEK	R2

SIGNATORY
TEAM LEADER:

SIGNATORY
CSML :

LIGHTING, GYM & PLAY EQUIPMENT DETAILS
SCALE :-1:250



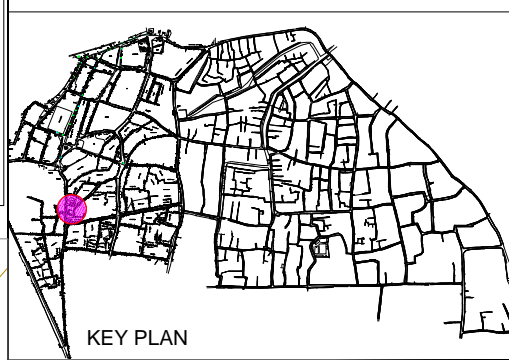
- NOTE:
1. ALL DIMENSIONS ARE IN M UNLESS MENTIONED OTHERWISE.
 2. ONLY WRITTEN DIMENSION ARE TO BE FOLLOWED
 3. THIS DRAWING IS TO BE READ ALONG WITH ALL REFERENCED OR MENTIONED DRAWINGS.
 4. NECESSARY CLARIFICATIONS MIGHT BE OBTAINED FROM ENGINEER.
 5. DISCREPANCY IF ANY SHOULD BE BROUGHTR TO THE NOTICE OF ENGINEER IMMEDIATELY.

LEGEND FOR LIGHTING			
S NO.	SYMBOL	DESCRIPTION	QTY IN NOS.
01		8M HEIGHT SINGLE ARM POLE WITH 113W, LED LIGHT, 4000K	02
02		8M HEIGHT DOUBLE ARM POLE WITH 113W, LED LIGHT, 4000K	01
03		27W, LED SPOT LIGHT-NSL-12M, 3000K	04
04		3M HEIGHT POST TOP WITH 34W LED LIGHT 106, 3000K @ 3.5M HEIGHT	10

EXISTING TREE

LEGEND FOR PLAY & GYM EQUIPMENT

- See Saw
- Swings
- Air Walker (5.35x5.55m)
- Shoulder Wheel (2.95x3.65m)
- Spinning Bike (4.05x3.70m)



CLIENT : COCHIN SMART MISSION LIMITED
9th Floor, Revenue Tower,
Park Avenue, Kochi-682011, Kerala,India

PMC TEAM : IPE Global & Haskoning DHV Consulting Pvt. Ltd.
5th Floor, Revenue Tower,
Park Avenue, Kochi-682011, Kerala,India

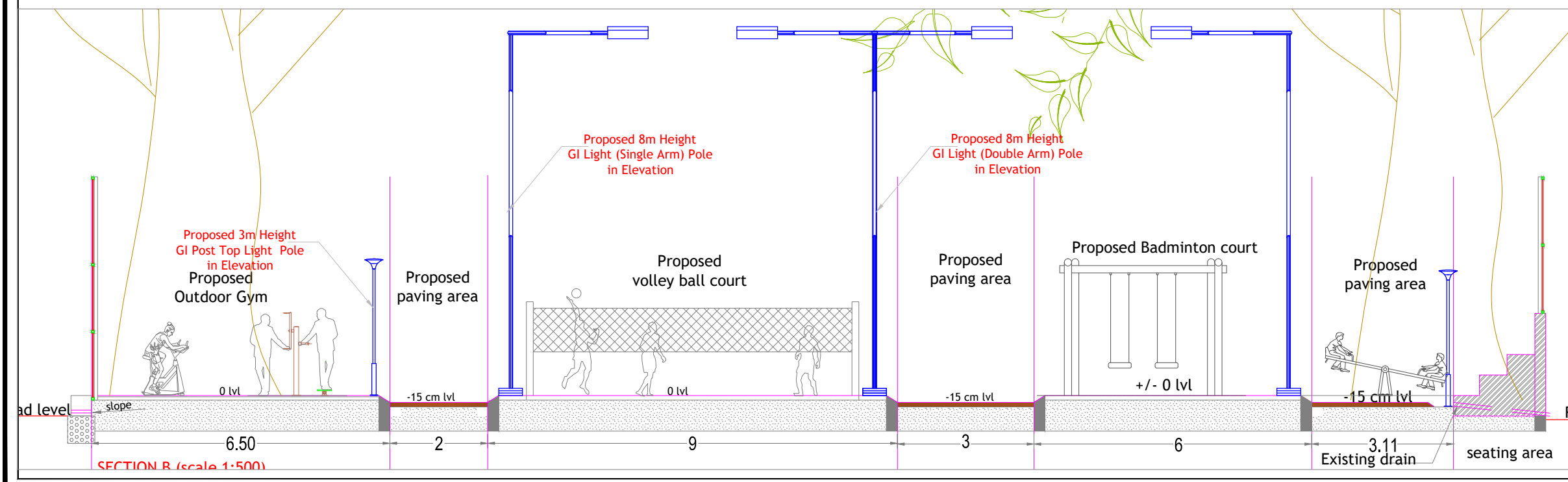
PROJECT NAME
DEVELOPMENT OF OPEN SPACE @ FORT KOCHI
PATTALAM GROUND

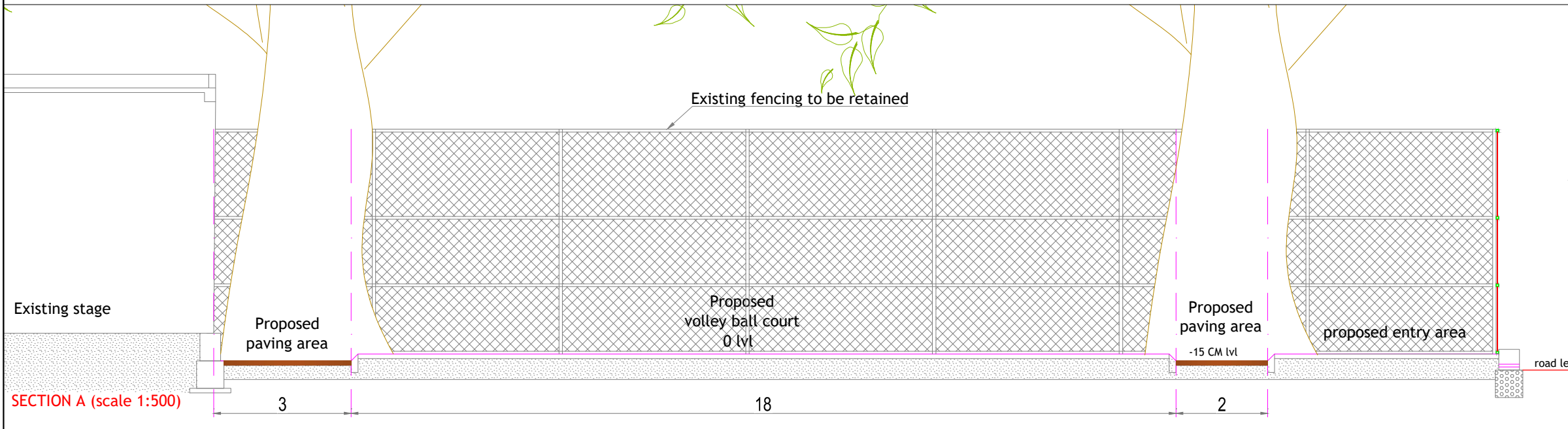
TITLE : PATTALAM GROUND_DETAIL PLAN & SECTION

DRG NO. CSML/M8/OSG/PG-FK/AR-001 SCALE : 1:500 (A3) DATE : 06-09-2019

Drawn BY	Design BY	Checked BY	REVISION
RAMANUJAM	RAMANUJAM	ABHISHEK	R2

SIGNATORY TEAM LEADER:	SIGNATORY CSML :
------------------------	------------------



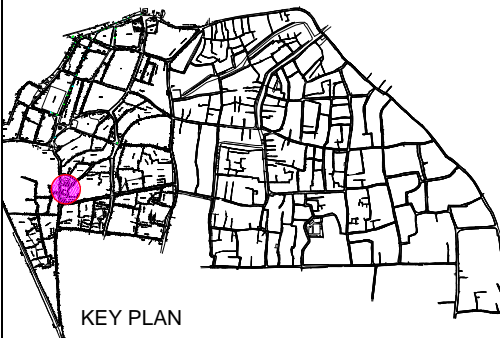


- NOTE:
1. ALL DIMENSIONS ARE IN M UNLESS MENTIONED OTHERWISE.
 2. ONLY WRITTEN DIMENSION ARE TO BE FOLLOWED
 3. THIS DRAWING IS TO BE READ ALONG WITH ALL REFERENCED OR MENTIONED DRAWINGS.
 4. NECESSARY CLARIFICATIONS MIGHT BE OBTAINED FROM ENGINEER.
 5. DISCREPANCY IF ANY SHOULD BE BROUGHTR TO THE NOTICE OF ENGINEER IMMEDIATELY.

LEGEND FOR LIGHTING			
S NO.	SYMBOL	DESCRIPTION	QTY IN NOS.
01		8M HEIGHT SINGLE ARM POLE WITH 113W, LED LIGHT, 4000K	02
02		8M HEIGHT DOUBLE ARM POLE WITH 113W, LED LIGHT, 4000K	01
03		27W,LED SPOT LIGHT-NSL-12M,3000K	04
04		3M HEIGHT POST TOP WITH 34W LED LIGHT 106, 3000K @ 3.5M HEIGHT	10



LEGEND FOR PLAY & GYM EQUIPMENT	
	- See Saw
	- Swings
	- Air Walker (5.35x5.55m)
	- Shoulder Wheel (2.95x3.65m)
	- Spinning Bike (4.05x3.70m)



CLIENT : COCHIN SMART MISSION LIMITED
9th Floor, Revenue Tower,
Park Avenue, Kochi-682011, Kerala,India

PMC TEAM : IPE Global & Haskoning DHV Consulting Pvt. Ltd.
5th Floor, Revenue Tower,
Park Avenue, Kochi-682011, Kerala,India

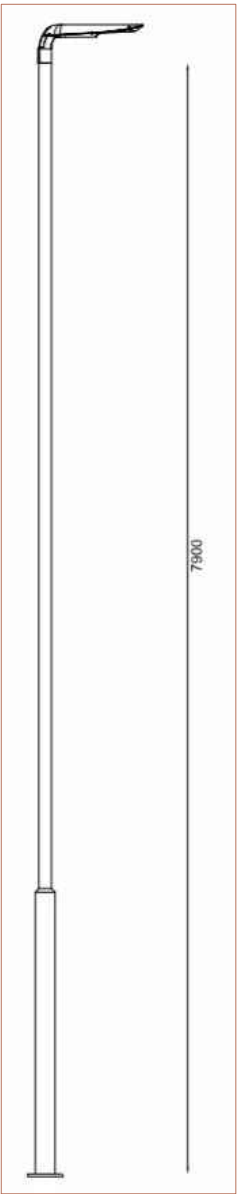
PROJECT NAME
DEVELOPMENT OF OPEN SPACE @ FORT KOCHI
PATTALAM GROUND

TITLE : PATTALAM GROUND_DETAIL PLAN & SECTION

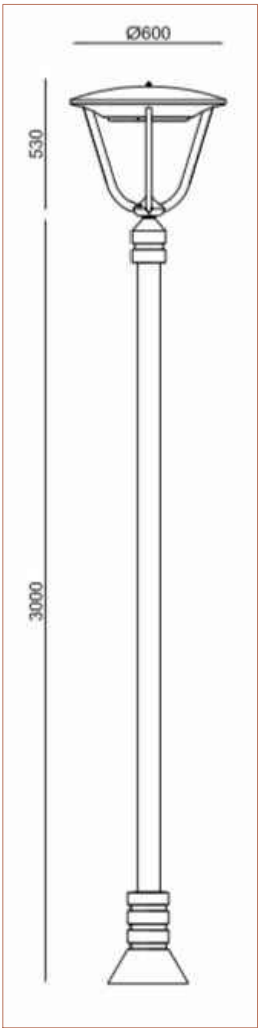
DRG NO. CSML/M8/OSG/PG-FK/AR-002	SCALE : 1:500 (A3) DATE : 06-09-2019	N
-------------------------------------	---	---

Drawn BY	Design BY	Checked BY	REVISION
RAMANUJAM	RAMANUJAM	ABHISHEK	R2

SIGNATORY TEAM LEADER:	SIGNATORY CSML :
---------------------------	---------------------



8M HEIGHT POLE



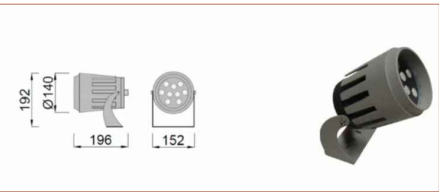
3M HEIGHT POST TOP



Steel Swing



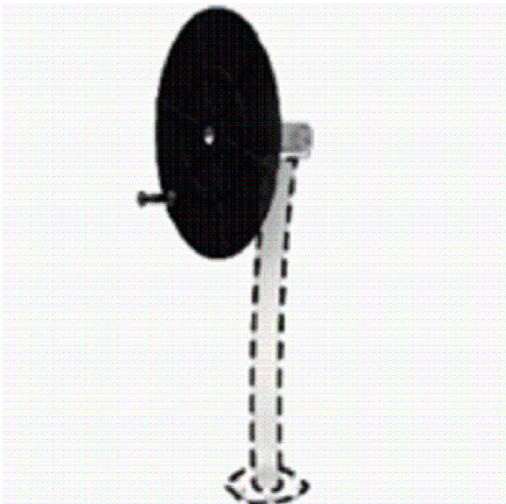
Steel See Saw



SPOT LIGHT



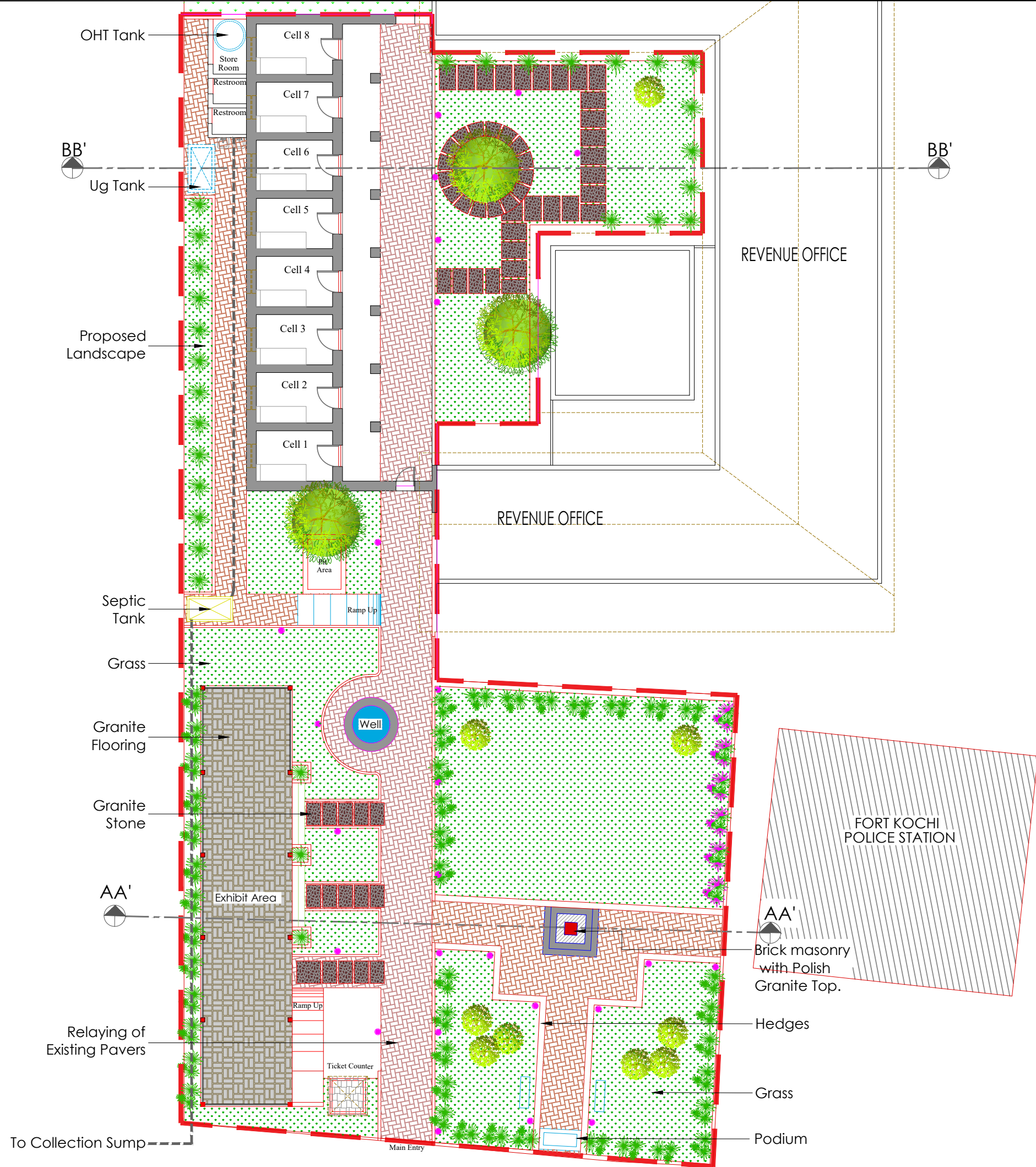
Spinning Bike



Shoulder Wheel



Airwalker



- NOTE:
1. ALL DIMENSIONS ARE IN M UNLESS MENTIONED OTHERWISE.
 2. ONLY WRITTEN DIMENSION ARE TO BE FOLLOWED
 3. THIS DRAWING IS TO BE READ ALONG WITH ALL REFERENCED OR MENTIONED DRAWINGS.
 4. NECESSARY CLARIFICATIONS MIGHT BE OBTAINED FROM CSML.
 5. DISCREPANCY IF ANY SHOULD BE BROUGHTR TO THE NOTICE OF CSML OFFICE IMMEDIATELY.

CLIENT : COCHIN SMART MISSION LIMITED
10th Floor, Revenue Tower,
Park Avenue, Kochi-682011, Kerala,India

PMC TEAM : IPE Global & Haskoning DHV Consulting Pvt. Ltd.
5th Floor, Revenue Tower,
Park Avenue, Kochi-682011, Kerala,India

PROJECT NAME
FORT KOCHI JAIL RENOVATION

TITLE : FLOOR PLAN

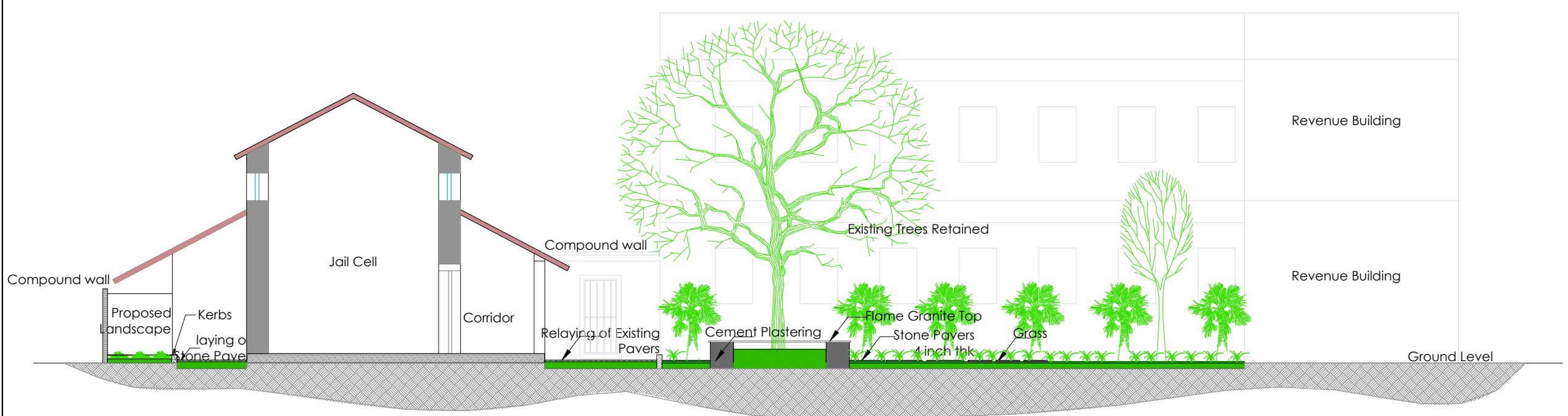
DRG NO. CSML/M17/IDCU/FSM/AR-001
SCALE : 1:200 (A3)
DATE : 04-06-2019

Drawn BY	Design BY	Checked BY	REVISION
BALA	ANAND	ABHISHEK	RO

SIGNATORY ARCHITECT:
SIGNATORY CSML :



SECTION -AA'



SECTION -BB'

- NOTE:
1. ALL DIMENSIONS ARE IN M UNLESS MENTIONED OTHERWISE.
 2. ONLY WRITTEN DIMENSION ARE TO BE FOLLOWED
 3. THIS DRAWING IS TO BE READ ALONG WITH ALL REFERENCED OR MENTIONED DRAWINGS.
 4. NECESSARY CLARIFICATIONS MIGHT BE OBTAINED FROM CSML.
 5. DISCREPANCY IF ANY SHOULD BE BROUGHTR TO THE NOTICE OF CSML OFFICE IMMEDIATELY.

CLIENT : COCHIN SMART MISSION LIMITED
10th Floor, Revenue Tower,
Park Avenue, Kochi-682011, Kerala,India

PMC TEAM : IPE Global & Haskoning DHV Consulting Pvt. Ltd.
5th Floor, Revenue Tower,
Park Avenue, Kochi-682011, Kerala,India

PROJECT NAME
FORT KOCHI JAIL RENOVATION

TITLE : SECTION

DRG NO. CSML/M17/IDCU/FSM/AR-002
SCALE : 1:100 (A3)
DATE : 18-05-2019

Drawn BY	Design BY	Checked BY	REVISION
BALA	ANAND	ABHISHEK	RO

SIGNATORY ARCHITECT:
SIGNATORY CSML :